

# ATOM-112-480-240-AP1-80-EMS-XL

## Product Datasheet

### Overview

- 112KVA class
- Feeds up to (12) 80A/19.2KW ports: ☐
- Service entrance rated
- Fully assembled and integrated from primary input to branch circuit output.
- Single LTE connection.
- Access Controls: QR Code
- Integral Energy Management System (EMS):



Representative product image. Final product may vary in appearance & layout.




| # of Ports Charging | Output per Port (amps) | Output per Port (kW) | System Output (kW) | System Amps | MPH charging | Time to Charge (hrs): |
|---------------------|------------------------|----------------------|--------------------|-------------|--------------|-----------------------|
| 1                   | 80                     | 19.20                | 19.2               | 80          | 64.0         | 0.6                   |
| 2                   | 80                     | 19.20                | 38.4               | 139         | 64.0         | 0.6                   |
| 3                   | 80                     | 19.20                | 57.6               | 139         | 64.0         | 0.6                   |
| 4                   | 80                     | 19.20                | 76.8               | 212         | 64.0         | 0.6                   |
| 5                   | 70                     | 16.80                | 84.0               | 242         | 56.0         | 0.7                   |
| 6                   | 70                     | 16.80                | 100.8              | 242         | 56.0         | 0.7                   |
| 7                   | 60                     | 14.40                | 100.8              | 263         | 48.0         | 0.8                   |
| 8                   | 48                     | 11.52                | 92.2               | 254         | 38.4         | 1.0                   |
| 9                   | 44                     | 10.56                | 95.0               | 269         | 35.2         | 1.1                   |
| 10                  | 36                     | 8.64                 | 86.4               | 249         | 28.8         | 1.4                   |
| 11                  | 36                     | 8.64                 | 95.0               | 249         | 28.8         | 1.4                   |
| 12                  | 36                     | 8.64                 | 103.7              | 249         | 28.8         | 1.4                   |

(based on average 40 mile refill and 300 wh/mile vehicle efficiency)

### Core Technical Specifications

|                                |   |
|--------------------------------|---|
| System KVA Class               | 112KVA  |
| EMS per NEC Article 750        | Yes   |
| Input Circuit                  | 175A  |
| Primary (input) Voltage        | 480VAC, 3ph 4W (service)<br>480VAC, 3ph 3W (feeder) |
| Secondary Voltage              | 240VAC, 3ph, 3W                                     |
| Dimensions (overall)           | 62"L x 55.5"W x 79.3"H                              |
| Skid Weight                    | ~1,600-lbs  |
| Transformer Data               |   |
| KVA rating                     | 112.5   |
| Configuration                  | $\Delta$ - $\Delta$                                 |
| Temp. Rise                     | 150°C   |
| Insulation Rating              | 220°C   |
| Winding material               | Aluminum  |
| Enclosure                      | N3R   |
| Primary (input) OCP data       |   |
| Type                           | Enclosed Circuit Breaker                            |
| Trip Rating                    | 175A  |
| AIC Rating                     | 35K   |
| Enclosure                      | N3R   |
| Service Entrance Rating        | Yes   |
| Neutral kit                    | Yes   |
| EVSE Branch Panel (each of 2)  |   |
| Panel Rating                   | 400A  |
| Max. Number of branch EVSE     | 6   |
| Atom Switch rating/charge rate | 100A/80A  |
| Enclosure                      | N3R   |

### Compatible Charge Ports (all cables J1772 at 25')

| Pedestal Dual Port  | Pedestal Dual-port Cable-Managed  | Wallbox Dual-port   |
|---|---|---|
| <input type="checkbox"/>  | <input type="checkbox"/>  | <input type="checkbox"/>  |
|  |  |  |

### Standard Options (see next page for details)

|     |                                 |                          |
|-----|---------------------------------|--------------------------|
| OP1 | Electrical Grounding Kit        | <input type="checkbox"/> |
| OP2 | Skid Mounting - On Ground       | <input type="checkbox"/> |
| OP3 | Skid Mounting - On Concrete     | <input type="checkbox"/> |
| OP4 | Pedestal Mounting - On Ground   | <input type="checkbox"/> |
| OP5 | Pedestal Mounting - On Concrete | <input type="checkbox"/> |

### Software Options (see following page for details)

|    |                   |                          |
|----|-------------------|--------------------------|
| SW | Atom Insight Plus | <input type="checkbox"/> |
|----|-------------------|--------------------------|

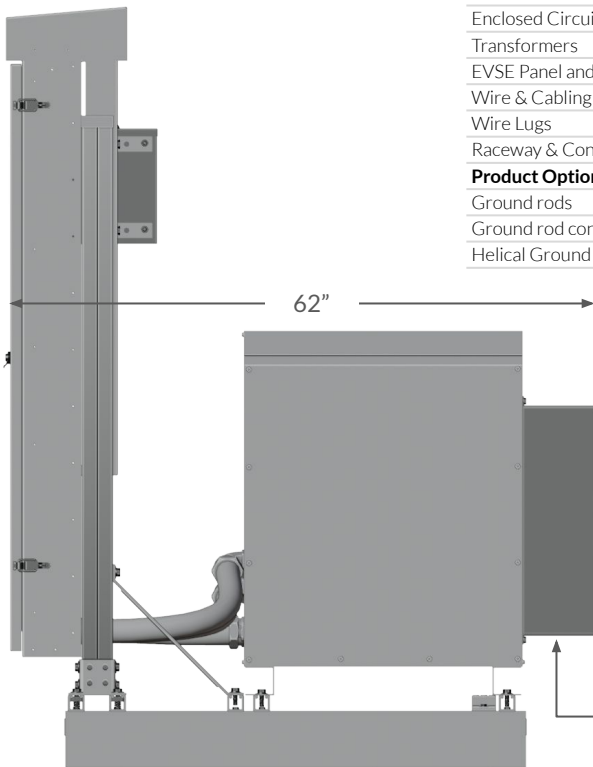
**3rd Party Listing Agency Information**

**Power Distribution Skid:**

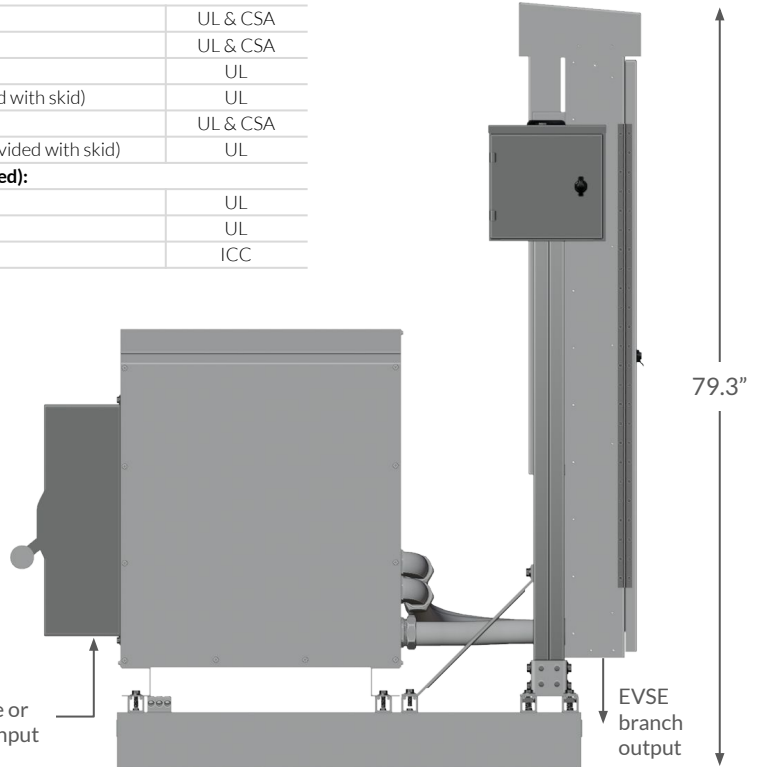
|   |          |
|---|----------|
| Enclosed Circuit Breakers                 | UL & CSA |
| Transformers                              | UL & CSA |
| EVSE Panel and Ports                      | UL       |
| Wire & Cabling (as provided with skid)    | UL       |
| Wire Lugs                                 | UL & CSA |
| Raceway & Conduit (as provided with skid) | UL       |

**Product Options (if selected):**

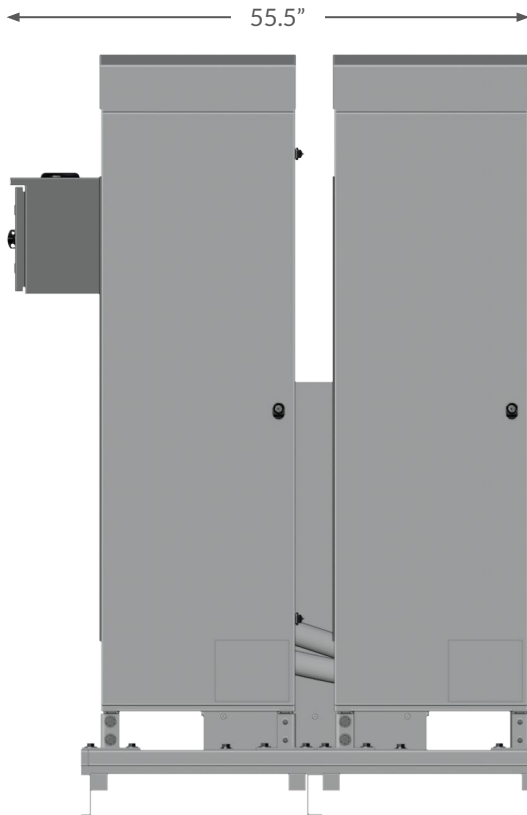
|                       |     |
|-----------------------|-----|
| Ground rods           | UL  |
| Ground rod connectors | UL  |
| Helical Ground Screws | ICC |



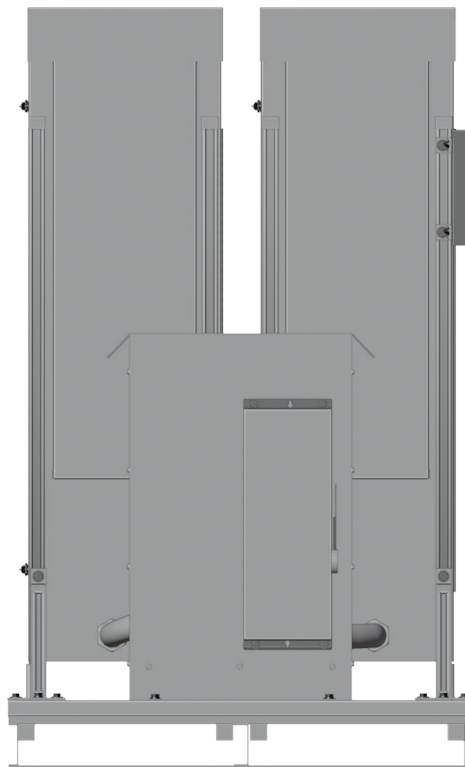
**Side View - Transformer Rear**



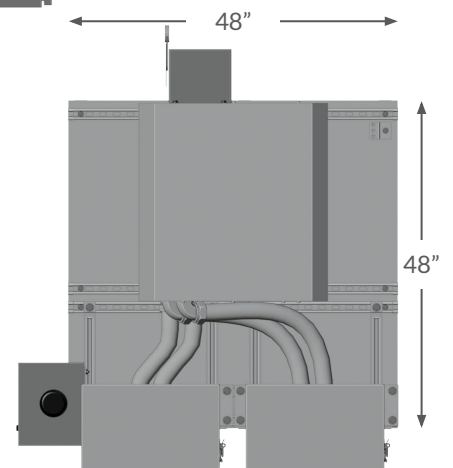
**Side View - Transformer Face**



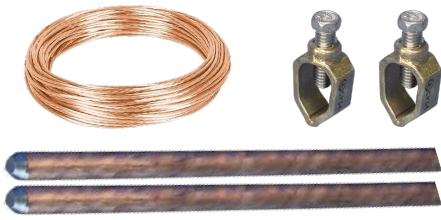
**EVSE Panel View**



**Primary Input View**



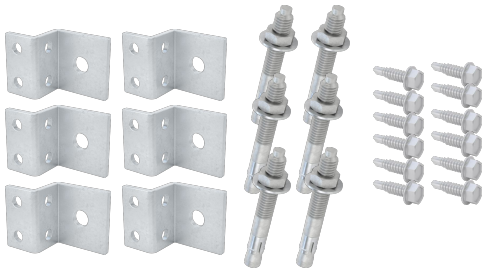
**Top View**



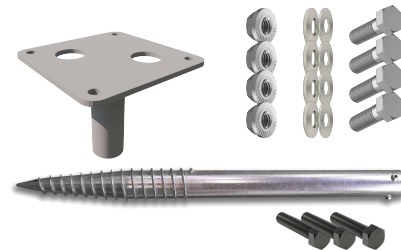
**OP1: Electrical Grounding Kit** - includes 2 ground rods, 2 ground rod connectors and 30' of grounding electrode conductor (#2 AWG CU bare or #1/0 AWG CU bare, depending on SKU)



**OP2: Skid Mounting - On Ground** - includes 4 ICC Certified helical ground screws (3" x 63" ea.), 4 support flanges (6" x 6") and necessary hardware for anchoring skid to ground.



**OP3: Skid Mounting - On Concrete** - includes  $\frac{3}{8}$ " x 3" concrete anchors, brackets and necessary hardware for anchoring skid to concrete slab.

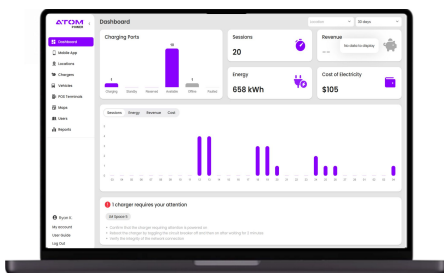


**OP4: Pedestal Mounting - On Ground** - includes 1 helical ground screw, 1 support/mounting flange and necessary hardware for anchoring pedestals to ground.



**OP5: Pedestal Mounting - On Concrete** - includes  $\frac{3}{8}$ " x 3" concrete anchors (per pedestal) for anchoring to concrete.

## Software - Atom Insight Plus



Mobile App  
Download:



Android



iOS

## Atom Insight Plus Software Subscription includes:

Remote visibility and control of Atom EV charging stations including Driver Mobile App (web or native). 24/7 network monitoring, Remote troubleshooting, Local Access Control, Driver Access Groups, Multi-Site Management, Multi-User Account Management, Analytics & Reporting, and Host management capabilities to manage access to charging stations and fee policies.

Additional policies include: Driver Reservations, Driver Support, Host Support, Revenue Collection, Direct Deposit, Tiered Pricing, Time-of-Use Rates, Session limits & Idle Fees, Parking & Activation Fees for complete Revenue Management.

NOTE: Additional credit card transaction fees apply.

[User Guide](#)