

Representative product image. Final product may vary in appearance & layout.

Overview




- 112KVA class
- Feeds up to (24) 48A/10KW ports: ☐
- Service entrance rated
- Fully assembled and integrated from primary input to branch circuit output.
- Single LTE connection.
- Access Controls: QR Code
- Integral Energy Management System (EMS).

See next page for full EMS profile.

Core Technical Specifications

System KVA Class	112KVA
EMS per NEC Article 750	Yes
Input Circuit	400A
Input Voltage	208VAC, 3ph 4W (service) 208VAC, 3ph 3W (feeder)
Dimensions (overall)	55.2"L x 51.1"W x 79.3"H
Skid Weight	~800-lbs
Input OCP data	
Type	Enclosed Circuit Breaker
Trip Rating	400A
AIC Rating	65K
Enclosure	N3R
Service Entrance Rating	Yes
Neutral kit	Yes
EVSE Branch Panel (each of 2)	
Panel Rating	400A
Max. Number of branch EVSE	12
Atom Switch rating/charge rate	60A/48A
Enclosure	N3R

Compatible Charge Ports (all cables J1772 at 25')

Pedestal Dual Port	Pedestal Dual-port Cable-Managed	Wallbox Dual-port
<input type="checkbox"/>	<input type="checkbox"/>	<input type="checkbox"/>
		

Standard Options (see next page for details)

OP1	Electrical Grounding Kit	<input type="checkbox"/>
OP2	Skid Mounting - On Ground	<input type="checkbox"/>
OP3	Skid Mounting - On Concrete	<input type="checkbox"/>
OP4	Pedestal Mounting - On Ground	<input type="checkbox"/>
OP5	Pedestal Mounting - On Concrete	<input type="checkbox"/>

Software Options (see following page for details)

SW	Atom Insight Plus	<input type="checkbox"/>
----	-------------------	--------------------------

# of Ports Charging	Output per Port (amps)	Output per Port (kW)	System Output (kW)	System Amps	MPH charging	Time to Charge (hrs):
1	48	9.99	10.0	48	33.3	1.2
2	48	9.99	20.0	83	33.3	1.2
3	48	9.99	30.0	83	33.3	1.2
4	48	9.99	39.9	127	33.3	1.2
5	48	9.99	49.9	166	33.3	1.2
6	48	9.99	59.9	166	33.3	1.2
7	48	9.99	69.9	209	33.3	1.2
8	48	9.99	79.9	249	33.3	1.2
9	48	9.99	89.9	249	33.3	1.2
10	48	9.99	99.8	292	33.3	1.2
11	44	9.15	100.7	305	30.5	1.3
12	44	9.15	109.8	305	30.5	1.3
13	40	9.99	108.2	313	33.3	1.2
14	36	7.49	104.8	314	25.0	1.6
15	32	6.66	99.8	306	22.2	1.8
16	30	6.24	99.8	312	20.8	1.9
17	28	5.82	99	291	19.4	2.1
18	28	5.82	104.8	291	19.4	2.1
19	28	5.82	110.7	316	19.4	2.1
20	24	4.99	99.8	292	16.6	2.4
21	24	4.99	104.8	312	16.6	2.4
22	22	4.57	100.7	305	15.2	2.6
23	22	4.57	105.2	305	15.2	2.6
24	22	4.57	109.8	305	15.2	2.6

(based on average 40 mile refill and 300 wh/mile vehicle efficiency)

3rd Party Listing Agency Information

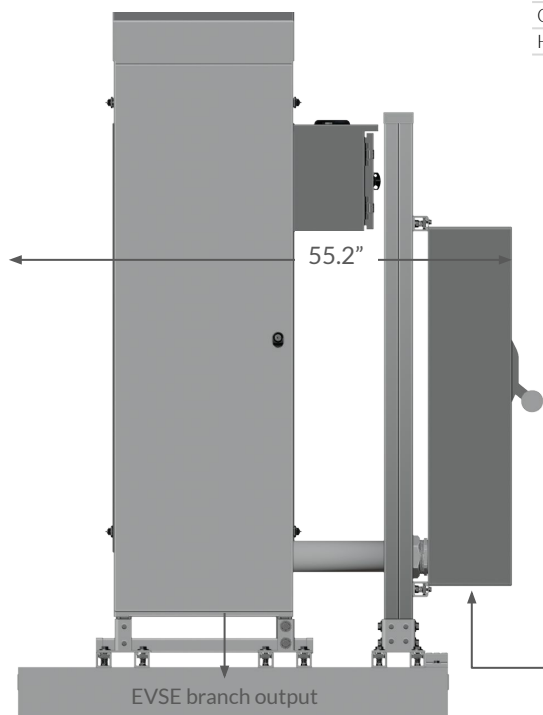
Power Distribution Skid:

Enclosed Circuit Breakers	UL & CSA
EVSE Panel and Ports	UL
Wire & Cabling (as provided with skid)	UL
Wire Lugs	UL & CSA
Raceway & Conduit (as provided with skid)	UL

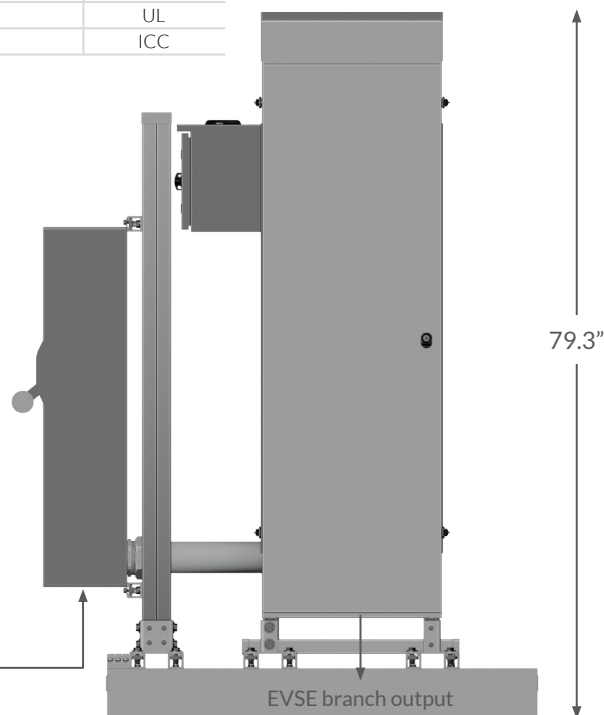
Product Options (if selected):

Ground rods	UL
Ground rod connectors	UL
Helical Ground Screws	ICC

Layout Data



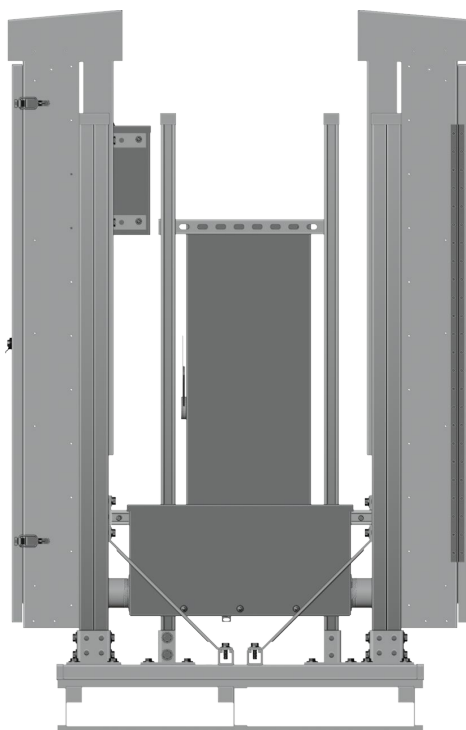
Side View - EVSE Panel 1



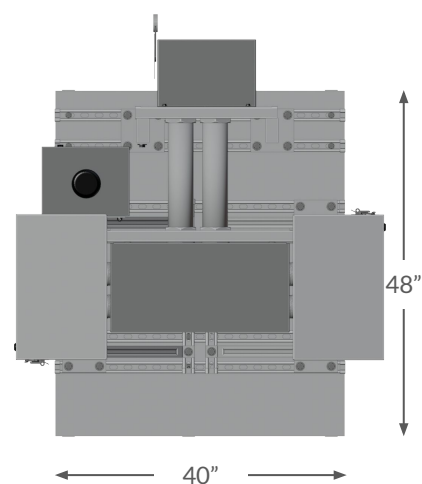
Side View - EVSE Panel 2



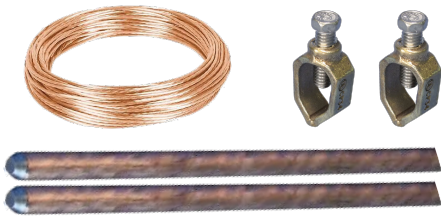
Primary Input View



Back View



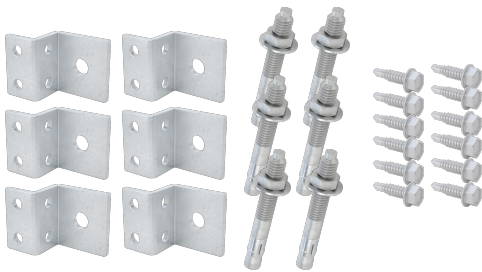
Top View



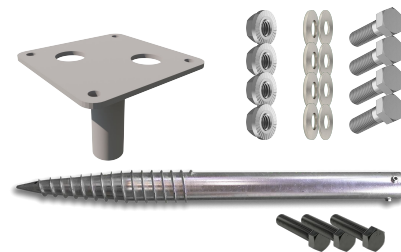
OP1: Electrical Grounding Kit - includes 2 ground rods, 2 ground rod connectors and 30' of grounding electrode conductor (#2 AWG CU bare or #1/0 AWG CU bare, depending on SKU)



OP2: Skid Mounting - On Ground - includes 4 ICC Certified helical ground screws (3" x 63" ea.), 4 support flanges (6" x 6") and necessary hardware for anchoring skid to ground.



OP3: Skid Mounting - On Concrete - includes $\frac{3}{8}$ " x 3" concrete anchors, brackets and necessary hardware for anchoring skid to concrete slab.

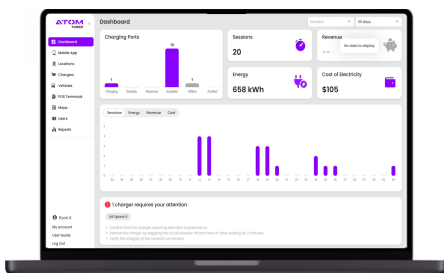


OP4: Pedestal Mounting - On Ground - includes 1 helical ground screw, 1 support/mounting flange and necessary hardware for anchoring pedestals to ground.



OP5: Pedestal Mounting - On Concrete - includes $\frac{3}{8}$ " x 3" concrete anchors (per pedestal) for anchoring to concrete.

Software - Atom Insight Plus



Mobile App
Download:



Android



iOS

Atom Insight Plus Software Subscription includes:

Remote visibility and control of Atom EV charging stations including Driver Mobile App (web or native). 24/7 network monitoring, Remote troubleshooting, Local Access Control, Driver Access Groups, Multi-Site Management, Multi-User Account Management, Analytics & Reporting, and Host management capabilities to manage access to charging stations and fee policies.

Additional policies include: Driver Reservations, Driver Support, Host Support, Revenue Collection, Direct Deposit, Tiered Pricing, Time-of-Use Rates, Session limits & Idle Fees, Parking & Activation Fees for complete Revenue Management.

NOTE: Additional credit card transaction fees apply.

[User Guide](#)