

ATOM-112-480-240-AP1-48-EMS-XL

Product Datasheet

Overview

- 112KVA class
- Feeds up to (24) 48A/11.5KW ports: ☐
- Service entrance rated
- Fully assembled and integrated from primary input to branch circuit output.
- Single LTE connection.
- Access Controls: QR Code
- Integral Energy Management System (EMS).

See next page for full EMS profile.






Representative product image. Final product may vary in appearance & layout.

Core Technical Specifications

System KVA Class	112KVA
EMS per NEC Article 750	Yes
Input Circuit	175A
Primary (input) Voltage	480VAC, 3ph 4W (service) 480VAC, 3ph 3W (feeder)
Secondary Voltage	240VAC, 3ph, 3W
Dimensions (overall)	62"L x 55.5"W x 79.3"H
Skid Weight	~1,600-lbs
Transformer Data	
KVA rating	112.5
Configuration	Δ - Δ
Temp. Rise	150°C
Insulation Rating	220°C
Winding material	Aluminum
Enclosure	N3R
Primary (input) OCP data	
Type	Enclosed Circuit Breaker
Trip Rating	175A
AIC Rating	35K
Enclosure	N3R
Service Entrance Rating	Yes
Neutral kit	Yes
EVSE Branch Panel (each of 2)	
Panel Rating	400A
Max. Number of branch EVSE	12
Atom Switch rating/charge rate	60A/48A
Enclosure	N3R

Compatible Charge Ports (all cables J1772 at 25')

Pedestal Dual Port	Pedestal Dual-port Cable-Managed	Wallbox Dual-port
<input type="checkbox"/>	<input type="checkbox"/>	<input type="checkbox"/>
		

Standard Options (see next page for details)

OP1	Electrical Grounding Kit	<input type="checkbox"/>
OP2	Skid Mounting - On Ground	<input type="checkbox"/>
OP3	Skid Mounting - On Concrete	<input type="checkbox"/>
OP4	Pedestal Mounting - On Ground	<input type="checkbox"/>
OP5	Pedestal Mounting - On Concrete	<input type="checkbox"/>

Software Options (see following page for details)

SW	Atom Insight Plus	<input type="checkbox"/>
----	-------------------	--------------------------

# of Ports Charging	Output per Port (amps)	Output per Port (kW)	System Output (kW)	System Amps	MPH charging	Time to Charge (hrs):
1	48	11.52	11.5	48	38.4	1.0
2	48	11.52	23.0	83	38.4	1.0
3	48	11.52	34.6	83	38.4	1.0
4	48	11.52	46.1	127	38.4	1.0
5	48	11.52	57.6	166	38.4	1.0
6	48	11.52	69.1	166	38.4	1.0
7	48	11.52	80.6	209	38.4	1.0
8	48	11.52	92.2	249	38.4	1.0
9	48	11.52	103.7	249	38.4	1.0
10	44	10.56	105.6	268	35.2	1.1
11	36	8.64	95.0	249	28.8	1.4
12	36	8.64	103.7	249	28.8	1.4
13	32	7.68	99.8	250	25.6	1.6
14	28	6.72	94.1	244	22.4	1.8
15	28	6.72	100.8	268	22.4	1.8
16	24	5.76	92.2	249	19.2	2.1
17	24	5.76	97.9	249	19.2	2.1
18	24	5.76	103.7	249	19.2	2.1
19	22	5.28	100.3	248	17.6	2.3
20	22	5.28	105.6	268	17.6	2.3
21	20	4.8	100.8	260	16.0	2.5
22	16	3.84	84.5	222	12.8	3.1
23	16	3.84	88.3	222	12.8	3.1
24	16	3.84	92.2	222	12.8	3.1

(based on average 40 mile refill and 300 wh/mile vehicle efficiency)

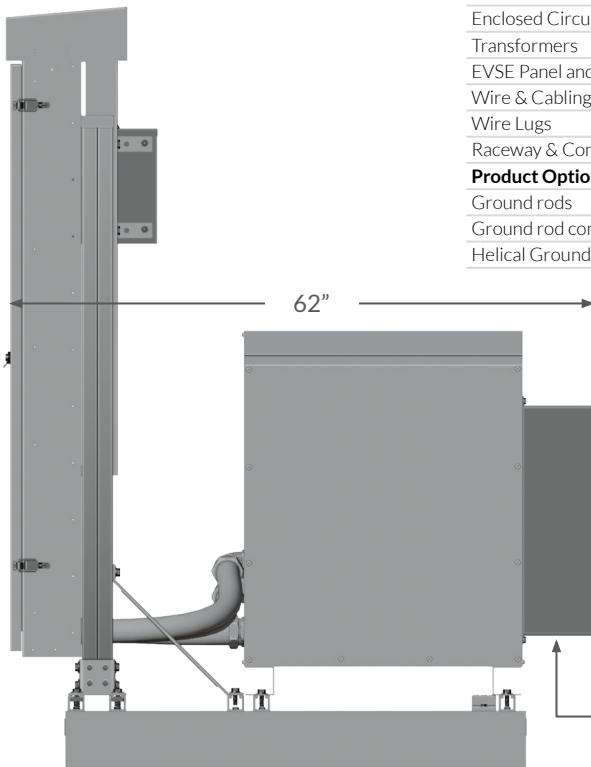
3rd Party Listing Agency Information

Power Distribution Skid:

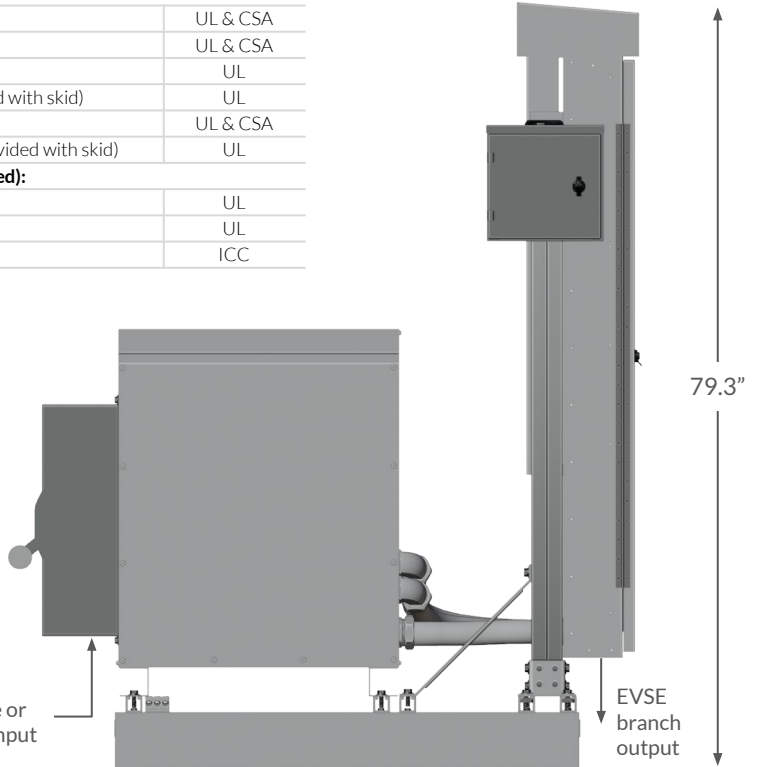
Enclosed Circuit Breakers	UL & CSA
Transformers	UL & CSA
EVSE Panel and Ports	UL
Wire & Cabling (as provided with skid)	UL
Wire Lugs	UL & CSA
Raceway & Conduit (as provided with skid)	UL

Product Options (if selected):

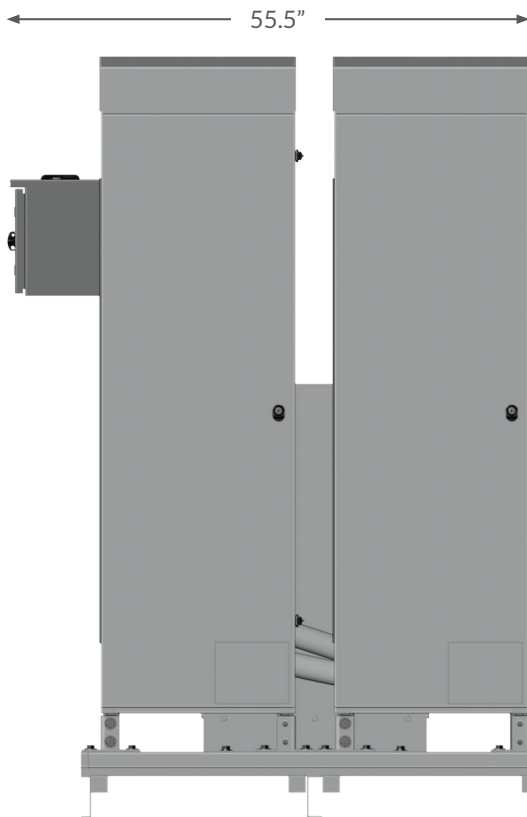
Ground rods	UL
Ground rod connectors	UL
Helical Ground Screws	ICC



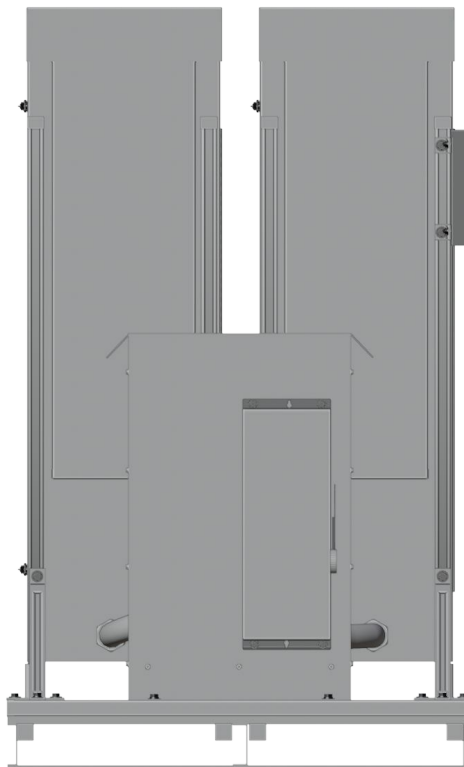
Side View - Transformer Rear



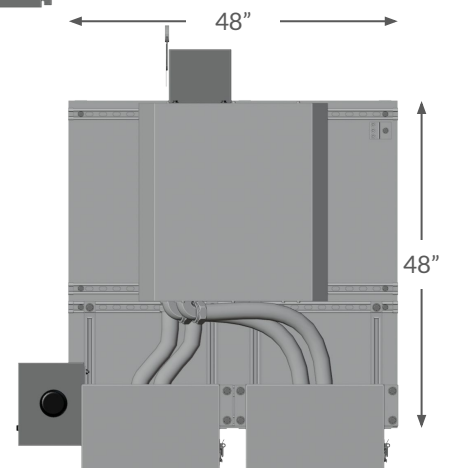
Side View - Transformer Face



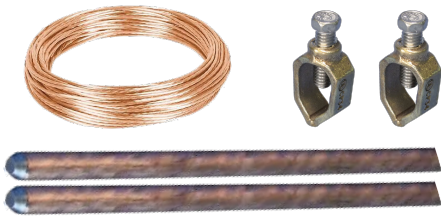
EVSE Panel View



Primary Input View



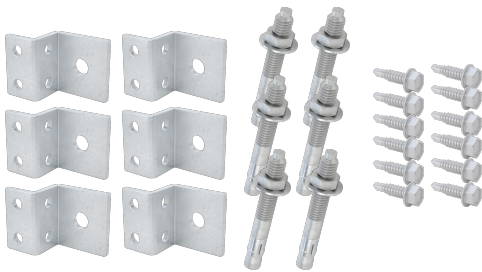
Top View



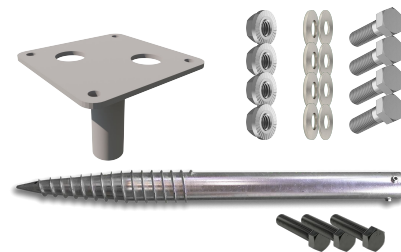
OP1: Electrical Grounding Kit - includes 2 ground rods, 2 ground rod connectors and 30' of grounding electrode conductor (#2 AWG CU bare or #1/0 AWG CU bare, depending on SKU)



OP2: Skid Mounting - On Ground - includes 4 ICC Certified helical ground screws (3" x 63" ea.), 4 support flanges (6" x 6") and necessary hardware for anchoring skid to ground.



OP3: Skid Mounting - On Concrete - includes $\frac{3}{8}$ " x 3" concrete anchors, brackets and necessary hardware for anchoring skid to concrete slab.

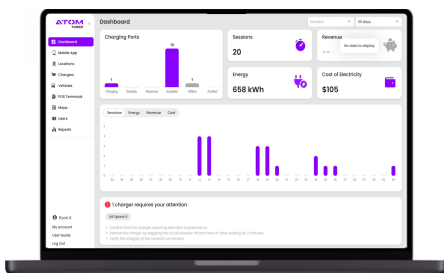


OP4: Pedestal Mounting - On Ground - includes 1 helical ground screw, 1 support/mounting flange and necessary hardware for anchoring pedestals to ground.



OP5: Pedestal Mounting - On Concrete - includes $\frac{3}{8}$ " x 3" concrete anchors (per pedestal) for anchoring to concrete.

Software - Atom Insight Plus



Mobile App
Download:



Android



iOS

Atom Insight Plus Software Subscription includes:

Remote visibility and control of Atom EV charging stations including Driver Mobile App (web or native). 24/7 network monitoring, Remote troubleshooting, Local Access Control, Driver Access Groups, Multi-Site Management, Multi-User Account Management, Analytics & Reporting, and Host management capabilities to manage access to charging stations and fee policies.

Additional policies include: Driver Reservations, Driver Support, Host Support, Revenue Collection, Direct Deposit, Tiered Pricing, Time-of-Use Rates, Session limits & Idle Fees, Parking & Activation Fees for complete Revenue Management.

NOTE: Additional credit card transaction fees apply.

[User Guide](#)